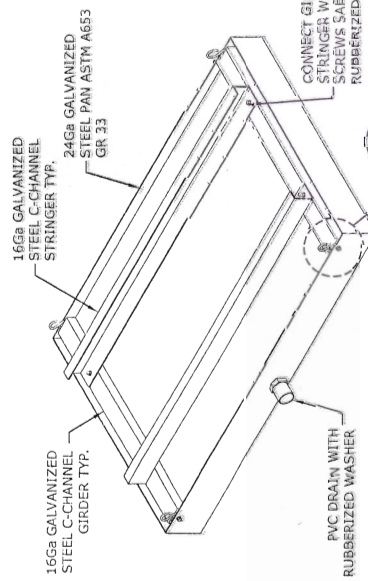


DESIGN NOTES

2010 FLORIDA BUILDING CODE, ASCE 7-10

DEAD LOAD:
 MAXIMUM A.H.U. WEIGHT = 210 LBS
 STEEL PAN = 15 LBS
 1 1/2" WATER = 103 LBS

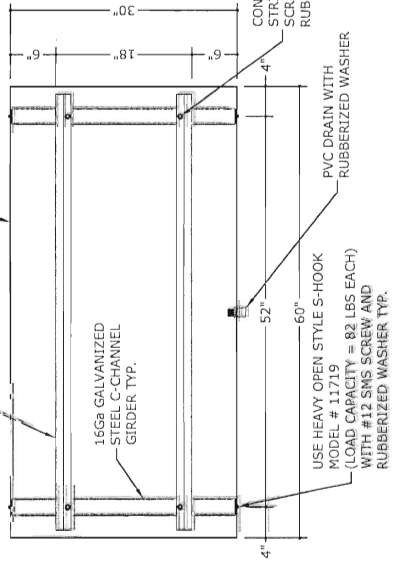
TOTAL DEAD LOAD = 328 LBS
 LATERAL LIVE LOAD: 15 PSF



A.H.U. SUPPORT ISOMETRIC
 SCALE: 3/4" = 1'-0"

A.H.U. SUPPORT CONNECTION DETAIL

SCALE: N.T.S.



A.H.U. SUPPORT PLAN VIEW
 SCALE: 3/4" = 1'-0"

GENERAL NOTES

- THE EXISTING HOST STRUCTURE MUST BE CAPABLE OF SUPPORTING THE LOADED SYSTEM AS VERIFIED BY THE ENGINEER & OR ARCHITECT OF RECORD, et al. THE HOST STRUCTURE WHICH IS DESIGNED, CERTIFIED, AND INSPECTED BY OTHERS MUST PROVIDE SUFFICIENT SOUND ANCHORAGE FOR THIS SPECIFIED SYSTEM. NO WARRANTY OR GUARANTEE TO THESE CONDITIONS, EITHER EXPRESSED OR IMPLIED, IS OFFERED WITH THIS CERTIFICATION. THE ARCHITECT/ENGINEER OF RECORD FOR THE PROJECT SUPERSTRUCTURE WITH WHICH THIS DESIGN IS USED SHALL BE RESPONSIBLE FOR THE INTEGRITY OF ALL SUPPORTING SURFACES TO THIS DESIGN WHICH SHALL BE COORDINATED BY THE PERMITTING CONTRACTOR. DIMENSIONS ARE SHOWN TO ILLUSTRATE DESIGN FORCES AND OTHER DESIGN CRITERIA. THEY MAY VARY SLIGHTLY, BUT SHALL REMAIN IN CONFORMANCE WITH PRODUCT APPROVAL REQUIREMENTS AND LIMITATIONS OF THIS PLAN. THE CONTRACTOR IS TO VERIFY ALL FIELD DIMENSIONS PRIOR TO INSTALLATION, AND VERIFY THAT PROPOSED DIMENSIONS AND FIELD CONDITIONS AGREE WITH THE PROPOSED PLAN. USE OF THIS DOCUMENT CONSTITUTES ACCEPTANCE OF THE PROPOSED SYSTEM LAYOUT, COMPONENTS SELECTED, AND INSTALLATION. THIS DOCUMENT CONTAINS INFORMATION RELEVANT TO THE NECESSARY STRUCTURAL REQUIREMENTS OF THE SYSTEM INSTALLATION. COMPONENTS AND FASTENERS NOT REFERENCED WHICH ARE PART OF THE INTERNAL FABRICATION OF THE SYSTEM SHALL BE PER MANUFACTURER PUBLISHED SPECIFICATIONS. CLEAR DIMENSIONS AND WEIGHTS OF MECHANICAL UNIT SHALL CONFORM TO SPECIFICATIONS STATED HEREIN. ALL MECHANICAL SPECIFICATIONS (CLEAR SPACE, TONNAGE, ETC.) SHALL BE AS PER MANUFACTURER RECOMMENDATIONS AND ARE THE EXPRESS RESPONSIBILITY OF THE CONTRACTOR.
- ALL A.H.U. SUPPORT MEMBERS SHALL BE ASTM A653 GRADE 5 (Fy=50 KSI) (U.N.O.).
- REACTION FORCES LISTED FOR USE WITH HOST STRUCTURE VERIFICATION ARE CALCULATED USING ASD METHODOLOGY. DESIGN PROFESSIONAL OF RECORD TO VERIFY APPLICABILITY AND/OR ADDITIONAL FACTORS FOR USE WITH HOST STRUCTURE VERIFICATION.
- ALL FASTENERS TO BE # 12 OR GREATER SAE GRADE 5, WITH (5) PINCHES MIN. PAST THE THREAD PLANE OR NUT. COORDINATE ANCHOR PLACEMENT (IN CONFORMANCE WITH THIS DOCUMENT) WITH MANUFACTURER TO PREVENT DAMAGE TO MECHANICAL UNIT HOUSING AND COMPONENTS. ALL BOLTS SHALL BE HOT DIPPED GALVANIZED, OR STAINLESS STEEL & MEET THE REQUIREMENTS OF ASTM A307 WITH HARDENED WASHERS AND HEX NUTS.
- THE CONTRACTOR IS RESPONSIBLE TO INSULATE ALL MEMBERS FROM DISSIMILAR MATERIALS TO PREVENT ELECTROLYSIS, I.E. ALUMINUM PER F.B.C. 2003.8.4. ELECTRICAL GROUND, WHEN REQUIRED, TO BE DESIGNED & INSTALLED BY OTHERS. ALL MECHANICAL SPECIFICATIONS (CLEAR SPACE, TONNAGE, ETC.) SHALL BE AS PER MANUFACTURER RECOMMENDATIONS AND ARE THE EXPRESS RESPONSIBILITY OF THE CONTRACTOR.
- WATER-TIGHTNESS OF EXISTING HOST SUBSTRATE SHALL BE THE FULL RESPONSIBILITY OF THE INSTALLING CONTRACTOR. CONTRACTOR SHALL ENSURE THAT ANY NEW, REMOVED OR ALTERED WATERPROOFING MEMBRANE IS RESTORED AFTER FABRICATION AND INSTALLATION OF STRUCTURE PROPOSED HEREIN. THIS ENGINEER SHALL NOT BE RESPONSIBLE FOR ANY WATERPROOFING OR LEAKAGE ISSUES WHICH MAY OCCUR AS WATER-TIGHTNESS SHALL BE THE FULL RESPONSIBILITY OF THE INSTALLING CONTRACTOR.
- ENGINEERING EXPRESS HAS NOT VISITED THIS JOBSITE. INFORMATION CONTAINED HEREIN IS BASED ON CONTRACTOR-SUPPLIED DATA AND MEASUREMENTS. ENGINEERING EXPRESS SHALL NOT BE HELD RESPONSIBLE OR LIABLE IN ANY WAY FOR ERRONEOUS OR INACCURATE DATA OR MEASUREMENTS. DIMENSIONS ARE SHOWN TO ILLUSTRATE DESIGN FORCES AND OTHER DESIGN CRITERIA. THEY MAY VARY SLIGHTLY, BUT MUST REMAIN WITHIN THE LIMITATIONS SPECIFIED HEREIN. WORK SHALL BE FIELD VERIFIED BY OTHERS PRIOR TO CONSTRUCTION. ENGINEERING EXPRESS SHALL BE NOTIFIED AND GIVEN AN OPPORTUNITY TO RE-EVALUATE OUR WORK UPON DISCOVERY OF ANY INACCURATE INFORMATION PRIOR TO MODIFICATION OF EXISTING FIELD CONDITIONS AND FABRICATION AND INSTALLATION OF MATERIALS.
- ENGINEER SEAL AFFIXED HERETO VALIDATES STRUCTURAL DESIGN AS SHOWN ONLY. USE OF THIS SPECIFICATION BY CONTRACTOR, et al. INDEMNIFIES & SAVES HARMLESS THIS ENGINEER FOR ALL COSTS & DAMAGES INCLUDING LEGAL FEES & APPELLATE FEES RESULTING FROM MATERIAL FABRICATION, SYSTEM ERECTION, CONSTRUCTION PRACTICES BEYOND THAT WHICH IS CALLED FOR BY LOCAL, STATE, & FEDERAL CODES & FROM DEVIATIONS OF THIS PLAN.
- CEPT AS EXPRESSLY PROVIDED HEREIN, NO ADDITIONAL CERTIFICATIONS OR AFFIRMATIONS ARE INTENDED.

FRANK L. BENNARD, P.E.
 # PED004549
 02/15/2013

ENGINEERING EXPRESS
 WWW.ENGGXP.COM
 DEPT OF AUTH 88888
 160 SW 12th AVENUE, #106
 DEERFIELD BEACH, FL 33442
 PH: (954) 324-0660 FAX: (954) 324-0443
 A FRANK L. BENNARD, P.E., INC. INNOVATION

MIAMI TECH, INC.
 3611 NW 74TH STREET
 MIAMI, FL 33147
 PHONE: (305) 693-7054 FAX: (305) 693-6125
 AIR HANDLER SUPPORT
 SUSPENSION SYSTEM

DRWN/CHKD	DATE	REVISIONS	REMARKS
AML	02/07/13		
TSB			

THIS DOCUMENT IS THE PROPERTY OF ENGINEERING EXPRESS AND SHALL REMAIN THE PROPERTY OF ENGINEERING EXPRESS UNLESS OTHERWISE SPECIFIED. IT IS TO BE USED ONLY FOR THE PROJECT AND SITE SPECIFICALLY IDENTIFIED ON THE DRAWING. IT IS NOT TO BE REPRODUCED OR TRANSMITTED IN ANY FORM OR BY ANY MEANS, ELECTRONIC OR MECHANICAL, INCLUDING PHOTOCOPYING, RECORDING, OR BY ANY INFORMATION STORAGE AND RETRIEVAL SYSTEM. WITHOUT THE WRITTEN PERMISSION OF ENGINEERING EXPRESS, THIS DOCUMENT AND NOT PORTIONS THEREOF MAY BE REPRODUCED OR TRANSMITTED IN ANY FORM OR BY ANY MEANS, ELECTRONIC OR MECHANICAL, INCLUDING PHOTOCOPYING, RECORDING, OR BY ANY INFORMATION STORAGE AND RETRIEVAL SYSTEM.

13-MTI-02
 SCALE: N.T.S. 101
 PAGE DESCRIPTION:
 COPYRIGHT ENGINEERING EXPRESS

FRANK L. BENNARDO, P.E.
FE0046549

02/15/2013

ENGINEERING EXPRESS
160 SW 12th AVENUE, #106
DEERFIELD BEACH, FL 33442
PH: (954) 354-0660 FAX: (954) 354-0443
WWW.ENGGXP.COM
CERT. OF AUTH. #0888
A FRANK L. BENNARDO, P.E., INC. INNOVATION

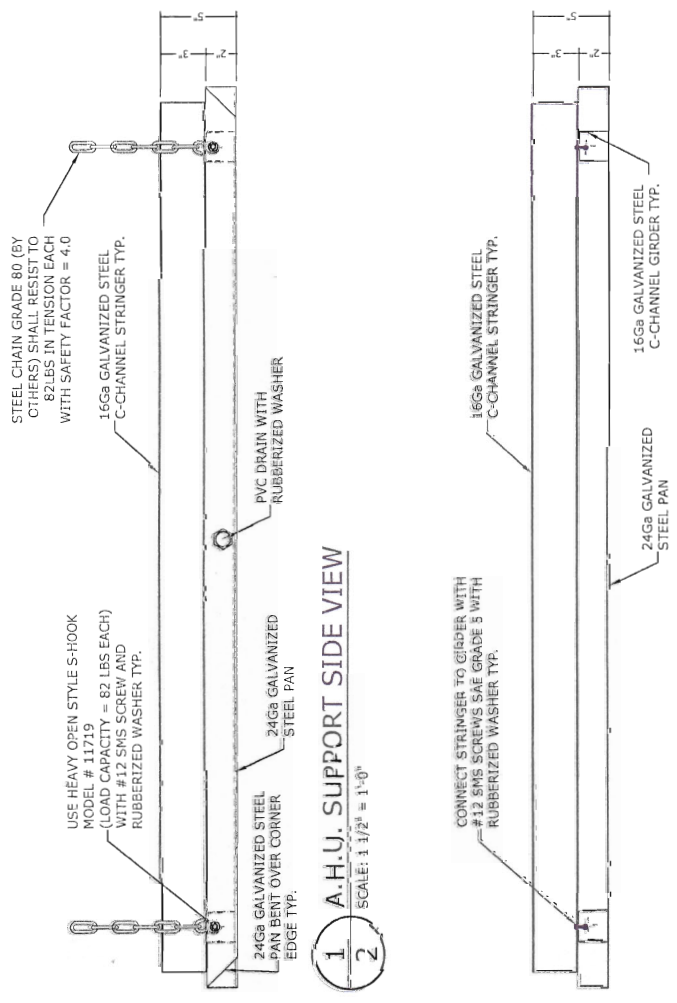
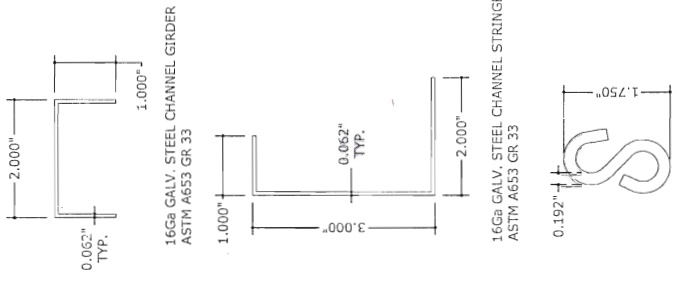
MIAMI TECH, INC.
3611 NW 74TH STREET
MIAMI, FL 33147
PHONE: (305) 693-7054 FAX: (305) 693-6125
AIR HANDLER SUPPORT
SUSPENSION SYSTEM

DRWN/CHKD	DATE
AML/TSB	02/07/13
INT ISSUE	
REMARKS	
COPYRIGHT ENGINEERING EXPRESS	
NO REVISIONS TO THIS DRAWING HAVE BEEN MADE SINCE THE DATE OF THE LAST REVISION. ANY CHANGES TO THIS DRAWING MUST BE MADE BY THE ORIGINAL DESIGNER OR AN AUTHORIZED REPRESENTATIVE OF THE ORIGINAL DESIGNER. ANY CHANGES TO THIS DRAWING MUST BE MADE BY THE ORIGINAL DESIGNER OR AN AUTHORIZED REPRESENTATIVE OF THE ORIGINAL DESIGNER.	

13-MTI-02
SCALE: NTS 1/01
PAGE DESCRIPTION:

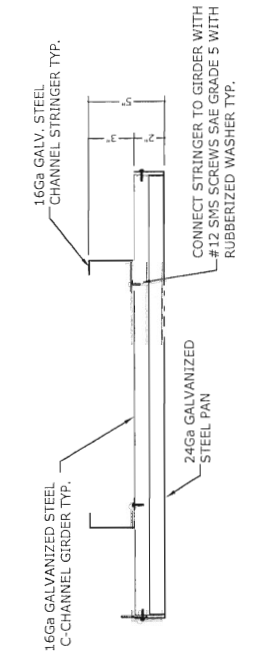
2

EXTRUSIONS



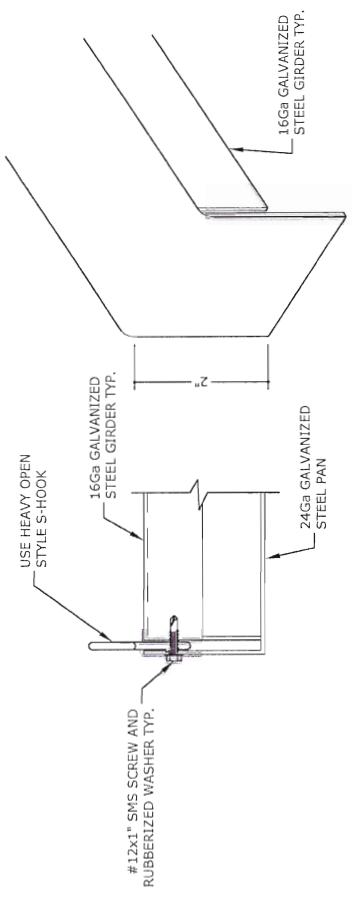
2 A.H.U. SUPPORT LONGITUDINAL SECTION

SCALE: 1 1/2" = 1'-0"



3 A.H.U. SUPPORT TRANSVERSAL SECTION

SCALE: 1 1/2" = 1'-0"



02/15/2013

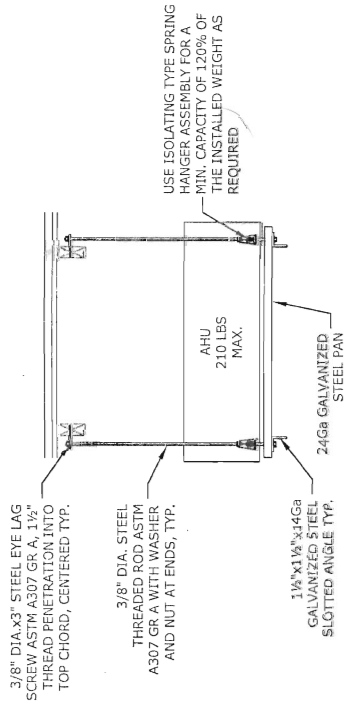
ENGINEERING EXPRESS
160 SW 12th Avenue, #106
Deerfield Beach, FL 33442
PH: (954) 354-0660 FAX: (954) 354-0443
WWW.ENGGXP.COM
CERT. OF AUTH. #9898
A FRANK L. BERNARDO, P.E., INC. INNOVATION

MIAMI TECH, INC.
3611 NW 74TH STREET
MIAMI, FL 33147
PHONE: (305) 693-7054 FAX: (305) 693-6125
AIR HANDLER SUPPORT
SUSPENSION SYSTEM

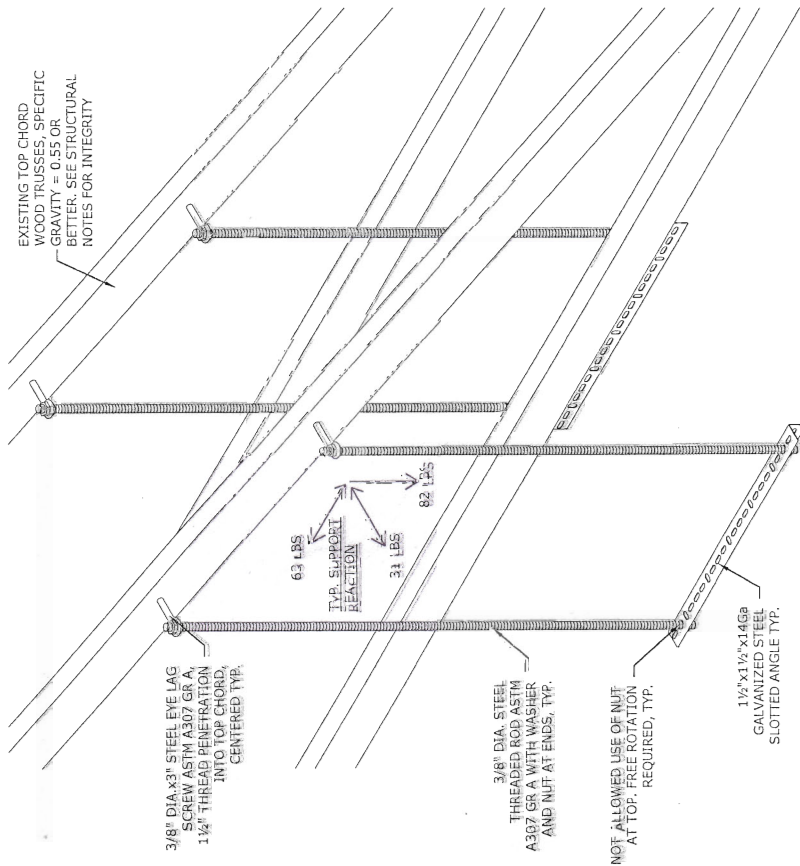
DATE	BY	CHKD	REV
02/07/13	TJB	AMM	
REVISIONS			
REVISIONS SHALL BE MADE BY THE ENGINEER AND SHALL BE THE RESPONSIBILITY OF THE ENGINEER. NO OTHER PERSONS SHALL BE PERMITTED TO MAKE ANY CHANGES TO THIS DOCUMENT AND NOT PERMITTED TO MAKE ANY CHANGES TO THIS DOCUMENT.			

13-MTI-02
SCALE: 3/4" = 1'-0"
PAGE DESCRIPTION

3



2 ALTERNATIVE AHU SUPPORT DETAIL
SECTION
SCALE: 3/4" = 1'-0"



1 ALTERNATIVE A.H.U. SUPPORT ISOMETRIC
SCALE: 3/4" = 1'-0"